



# CERTIFICATE COURSE IN DANCE/ MOVEMENT THERAPY

Logistics Partner

*Chaari*  
Center for Creative Movement Therapy

# WHAT IS DANCE/MOVEMENT THERAPY?

CMTAI (2019) defines Dance/Movement Therapy (also known as Creative Movement Therapy) as a psychotherapeutic framework that works with the mind-body connection to use personal movement language and dance for the health and wellness of an individual's physical, emotional, cognitive, social and behavioural aspects.



# COURSE CONTENT

THIS INTENSIVE COURSE COVERS THEORETICAL FRAMEWORKS AND MOVEMENT EXPERIENCES FROM DANCE THERAPY.

IT ALSO INCLUDES EVOLUTION, PRINCIPLES, GOALS, APPROACHES AND TECHNIQUES OF THE DISCIPLINE, ALONG WITH APPLICATIONS IN THE INDIAN CONTEXT.



We take pride in our one-of-a-kind program which engages students in the highest quality of training through handpicked faculty vetted for their academic qualifications and experience.



# Course Features

250+  
hours of  
Training  
(Online + Onsite)

10  
hours of  
Supervision

60  
hours of  
Fieldwork/  
Internship

# Certification

## MOVEMENT THERAPY FACILITATOR CID-UNESCO LEVEL III CERTIFICATION

---

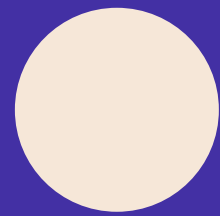
The course is certified by

- Creative Movement Therapy Association of India  
(Institutional Member of American Dance Therapy Association-ADTA)
- CID-UNESCO (International Dance Council, France)

# COURSE TOPICS

- DANCE/MOVEMENT THERAPY - THEORY AND PRACTICE
- SCHOOLS OF PSYCHOLOGY & MIND-BODY CONNECTION
- COUNSELLING SKILLS
- ETHICS IN DANCE/MOVEMENT THERAPY
- MOVEMENT ANALYSIS
- WORKING WITH DIFFERENT POPULATIONS
- RESEARCH METHODOLOGY
- FACILITATION SKILLS
- APPLICATIONS IN THE INDIAN CONTEXT

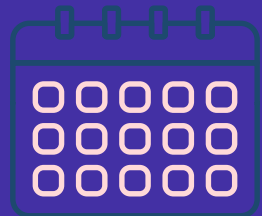
# COURSE DETAILS



## BATCHES

BATCH 1- NORTH ZONE (DEL ONSITE)

BATCH 2 - SOUTH ZONE (BLR ONSITE)



## DATES

MODULE 1 (ONSITE)

NORTH ZONE: AUG 26- SEPT 5

SOUTH ZONE: AUG 30 - SEPT 9

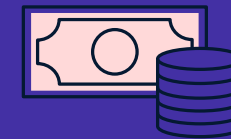
MODULE 2 (ONLINE) OCT 8 - OCT 17

MODULE 3 (ONLINE) NOV 5 - NOV 15

MODULE 4 (ONSITE):

NORTH ZONE - DEC 10 - DEC 22

SOUTH ZONE - DEC 10 - DEC 22



## FEEES

EARLY BIRD FEE (till 15th July):

Rs. 62,000 + 18% GST (General Course Fee)

Rs. 67,000 + 18% GST (With Psychology Pre-course)

REGULAR FEE (after 15th July):

Rs. 64,000 + 18% GST (General Course Fee)

Rs. 69,000 + 18% GST (With Psychology Pre-course)



## TIMINGS

ONLINE MODULES : 10AM TO 5:30PM

ONSITE MODULE :10:30AM TO 5:30PM





## VENUE

NORTH ZONE (Onsite Module):

Narenjayan Studio

53, Bharati Artists Colony Road

Vikas Marg

Near Nirman Vihar Metro Station

Delhi - 110092

SOUTH ZONE (Onsite Module):

Montfort Spirituality Centre

184, Swami Vivekananda Rd

Binna Mangala

Indiranagar

Bengaluru - 560038

APPLY AT:

[HTTPS://CUTT.LY/CERTCOURSE2022](https://cutt.ly/certcourse2022)



CONTACT INFO

EMAIL: [ADMIN@CMTAI.ORG](mailto:ADMIN@CMTAI.ORG)

PH: 9982843831

CALL HOURS- 10AM - 6PM (MON-SAT)

# Testimonials



Shruti Suman

2018 Batch

The course was an enriching learning experience! The trainers are very knowledgeable and approachable.

Since it was largely experiential, I explored and discovered parts to myself that have been dormant for years, and this journey has really changed my life!



Deepali Salil

2018 Batch

When you learn something new, that always helps you grow. It's adding to your knowledge. But this course adds on to your whole personality. The course has helped me discover who I truly am and the journey still continues. With the help of the amazing faculty, you truly gain a lot more than you are looking for.



movewithCMTAI



[www.cmtai.org](http://www.cmtai.org)



move\_with\_cmtai



Creative Movement Therapy Association of India  
Email: [info@cmtai.org](mailto:info@cmtai.org)

Logistics Partner



[www.chari.in](http://www.chari.in)